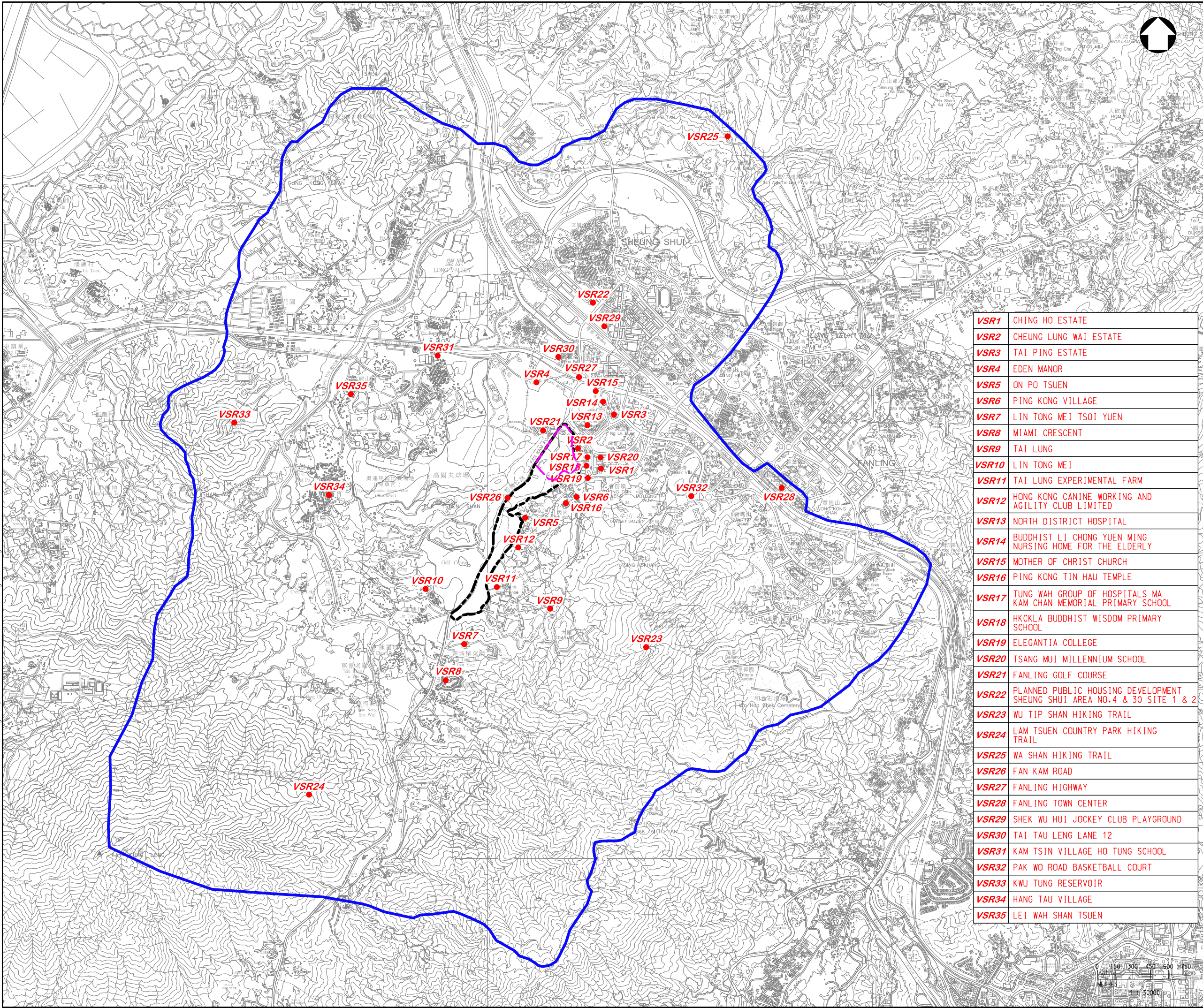


Date : 5/6/2022  
 Filename : X:\2514\331A CE17-2019 (FL GOLF COURSE)\02\_Drawing\Report\EIA\CADD\CE17\_EIA\_Fig\_003.dgn



- LEGEND :
- POTENTIAL DEVELOPMENT AREA BOUNDARY
  - VISUAL ENVELOPE
  - - - PROPOSED PUBLIC HOUSING DEVELOPMENT

VSR1	CHING HO ESTATE
VSR2	CHEUNG LUNG WAI ESTATE
VSR3	TAI PING ESTATE
VSR4	EDEN MANOR
VSR5	ON PO TSUEN
VSR6	PING KONG VILLAGE
VSR7	LIN TONG MEI TSOI YUEN
VSR8	MIAMI CRESCENT
VSR9	TAI LUNG
VSR10	LIN TONG MEI
VSR11	TAI LUNG EXPERIMENTAL FARM
VSR12	HONG KONG CANINE WORKING AND AGILITY CLUB LIMITED
VSR13	NORTH DISTRICT HOSPITAL
VSR14	BUDDHIST LI CHONG YUEN MING NURSING HOME FOR THE ELDERLY
VSR15	MOTHER OF CHRIST CHURCH
VSR16	PING KONG TIN HAU TEMPLE
VSR17	TUNG WAH GROUP OF HOSPITALS MA KAM CHAN MEMORIAL PRIMARY SCHOOL
VSR18	HKCKLA BUDDHIST WISDOM PRIMARY SCHOOL
VSR19	ELEGANTIA COLLEGE
VSR20	TSANG MUI MILLENNIUM SCHOOL
VSR21	FANLING GOLF COURSE
VSR22	PLANNED PUBLIC HOUSING DEVELOPMENT SHEUNG SHUI AREA NO.4 & 30 SITE 1 & 2
VSR23	WU TIP SHAN HIKING TRAIL
VSR24	LAM TSUEN COUNTRY PARK HIKING TRAIL
VSR25	WA SHAN HIKING TRAIL
VSR26	FAN KAM ROAD
VSR27	FANLING HIGHWAY
VSR28	FANLING TOWN CENTER
VSR29	SHEK WU HUI JOCKEY CLUB PLAYGROUND
VSR30	TAI TAU LENG LANE 12
VSR31	KAM TSIN VILLAGE HO TUNG SCHOOL
VSR32	PAK WO ROAD BASKETBALL COURT
VSR33	KWU TUNG RESERVOIR
VSR34	HANG TAU VILLAGE
VSR35	LEI WAH SHAN TSUEN

Rev	Description	By	Date
Consultant			
Project title			
AGREEMENT NO. CE17/2019 (CE) TECHNICAL STUDY ON PARTIAL DEVELOPMENT OF FANLING GOLF COURSE SITE - FEASIBILITY STUDY			
Drawing title			
VISUAL SENSITIVE RECEIVER PLAN			
Drawing no.			Rev.
FIGURE 11.5			—
Drawn	Date	Checked	Approved
CAD	09/04/21	—	EW
Scale	1 : 30000 (A3)		Status
FIGURE		FIGURE	

© COPYRIGHT RESERVED

土木工程拓展署  
 CIVIL ENGINEERING AND DEVELOPMENT DEPARTMENT  
 北拓展處  
 NORTH DEVELOPMENT OFFICE